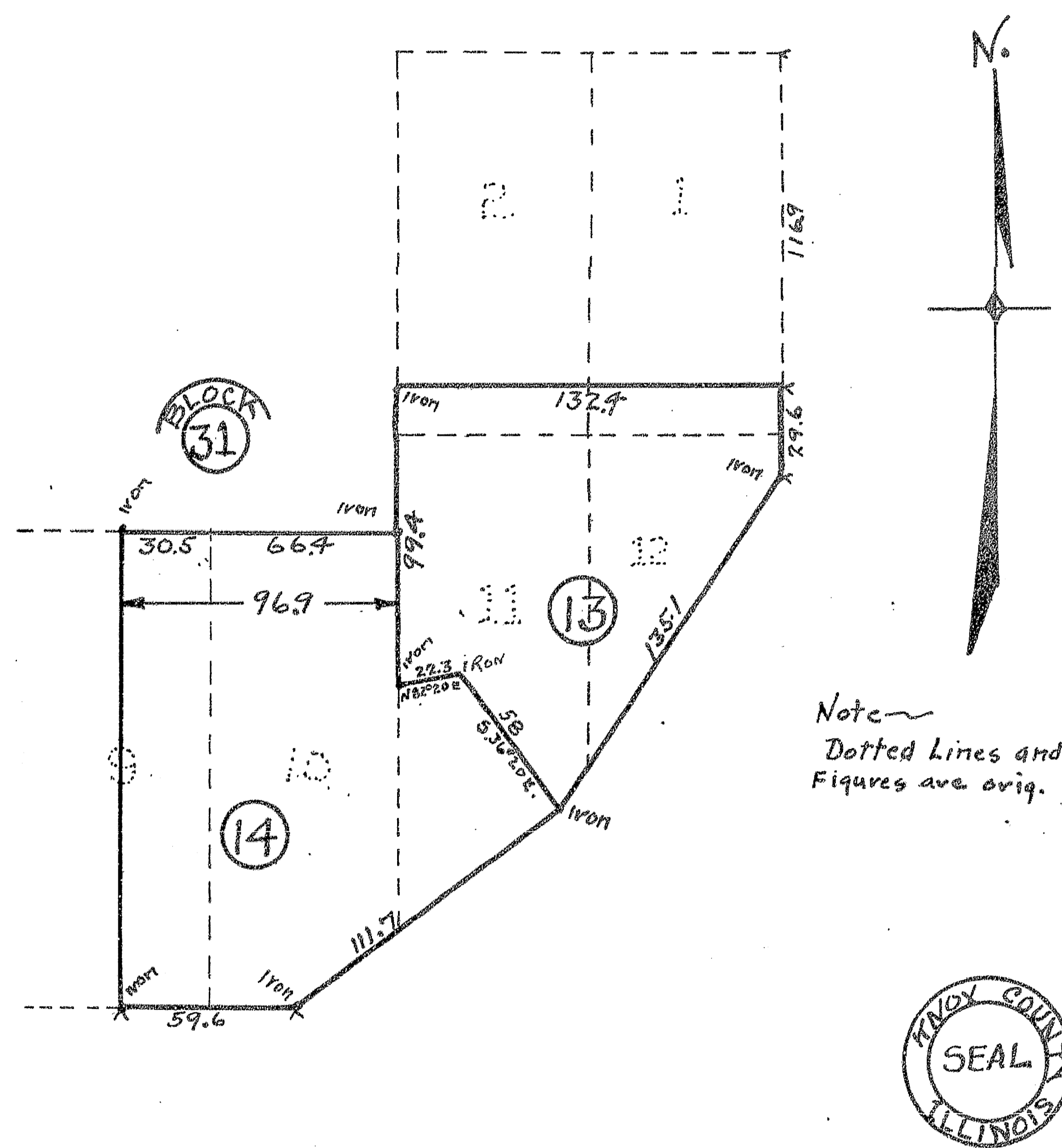


REVENUE PLAT 1935

— OF —

A SUBDIVISION OF PART OF LOTS ONE (1) TWO (2) NINE (9) TEN (10) ELEVEN (11) AND TWELVE (12) IN BLOCK 31 CAMP AND WEST'S ADDITION TO ONEIDA KNOX CO. ILLINOIS

Scale One inch = 60 feet



STATE OF ILLINOIS }
COUNTY OF KNOX } ss.

I Geo. A. Larson, County Clerk, within and for said County and State aforesaid, do hereby certify that I am the Keeper of the records, files and official seal of said county; I further certify that I find no reasonable tax sales or unpaid forfeited taxes against any of the real estate included in the plats hereto attached.

Witness my hand and official seal this 25th day of September, 1935

Geo. A. Larson
COUNTY CLERK.

STATE OF ILLINOIS }
Knox County. } ss.

I, Shirley S. Scott, County Surveyor of said Knox County, do hereby certify that the foregoing and annexed is a true and correct Plat and description of Lands mentioned for Survey and Platting by the County Clerk, as taken from the records of Knox County, and by measurements and survey, as provided for in Sections 62 and 63, Chapter 120, Revised Statutes of Illinois, 1935

Dated this 24th day of Sept. 1935.

Shirley S. Scott, County Surveyor.

Approved by me, this 25th day of Sept. 1935.

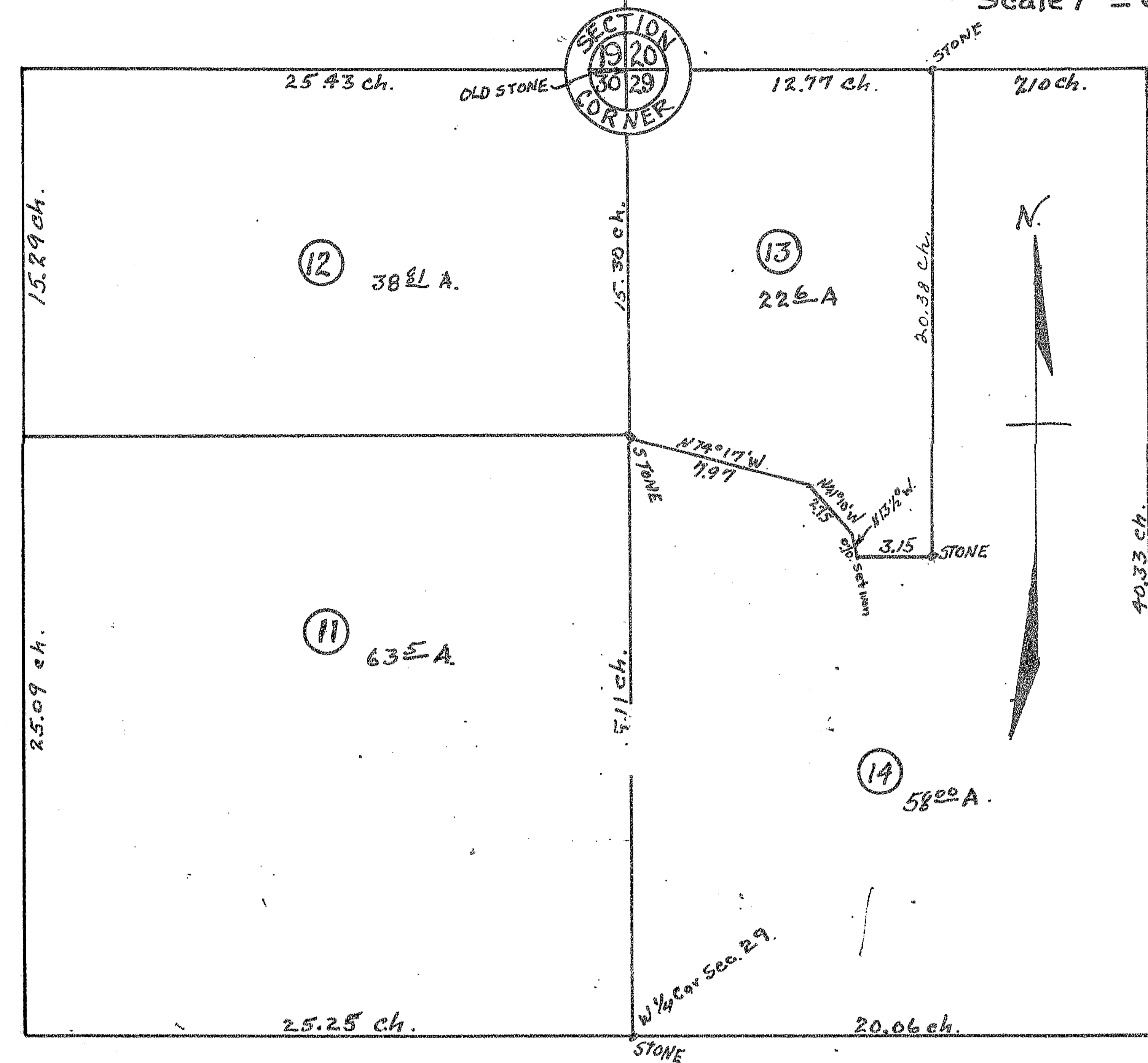
Geo. A. Larson, County Clerk.

REVENUE PLAT 1935

— OF —

A RESUBDIVISION OF LOTS ONE (1) AND THREE (3) IN N.W. 1/4 SEC. 20 ALSO LOTS EIGHT (8) AND TEN (10) IN N.E. 1/4 SEC. 30 ALL IN TWP. 12N. R1E OF 4th P.M. KNOX COUNTY ILLINOIS

Scale 1" = 6 chains



STATE OF ILLINOIS }
COUNTY OF KNOX } ss.

I Geo. A. Larson, County Clerk, within and for said County and State aforesaid, do hereby certify that I am the Keeper of the records, files and official seal of said county; I further certify that I find no reasonable tax sales or unpaid forfeited taxes against any of the real estate included in the plat hereto attached.

Witness my hand and official seal this 29th day of October, 1935

Geo. A. Larson
COUNTY CLERK.

STATE OF ILLINOIS }
Knox County. } ss.

I, Shirley S. Scott, County Surveyor of said Knox County, do hereby certify that the foregoing and annexed is a true and correct Plat and description of Lands mentioned for Survey and Platting by the County Clerk, as taken from the records of Knox County, and by measurements and survey, as provided for in Sections 62 and 63, Chapter 120, Revised Statutes of Illinois, 1935

Dated this 24th day of Oct. 1935.

Shirley S. Scott, County Surveyor.

Approved by me, this 29th day of October, 1935.

(Official Seal)

Geo. A. Larson, County Clerk.